



# Mid-States

Minority Supplier  
Development Council

## MBE Certification Briefing

PRESENTED BY: JARON  
HAGGERTY, DIRECTOR OF  
MBE SERVICES

# Who Are We??

## NMSDC



- ▶ Chartered in 1972
- ▶ Private, non-profit member services organization
- ▶ Nation's most dynamic force in developing successful relationships between America's top corporations and supply chain providers from the Asian, Black, Hispanic and Native American communities.
- ▶ Headquartered in New York, NY

## Mid-States MSDC



- ▶ Established in 1976
- ▶ Private, non-profit member services organization
- ▶ One of 23 regional affiliates of the National Minority Supplier Development Council (NMSDC)
- ▶ Certifying entity for ethnic minority businesses interested in doing business with corporate America
- ▶ Offices in Indianapolis and St. Louis
- ▶ Serving Central Illinois (excluding Chicago), Indiana (excluding NW Indiana) and Eastern Missouri

# Meet The Mid-States MSDC Team



**Carolyn Mosby**  
President & CEO



**Angela Franklin**  
Vice President & COO



**Denika Thomas**  
Director, Corporate Relations,  
Projects & Events



**JaRon Haggerty**  
Director, Minority Business  
Enterprise Services

# The Mid-States and NMSDC Network

NMSDC

**1,431**

Corporate Members

**Over 12,000**

Certified MBEs

**\$400 Billion**

Annual Economic Impact

**Local      National**  
**Mid-States**

**54      16**

Corporate Members

**260**

Certified MBEs

**\$6.8 Billion**

Annual Economic Impact

# Members and Constituents

## Corporate Members

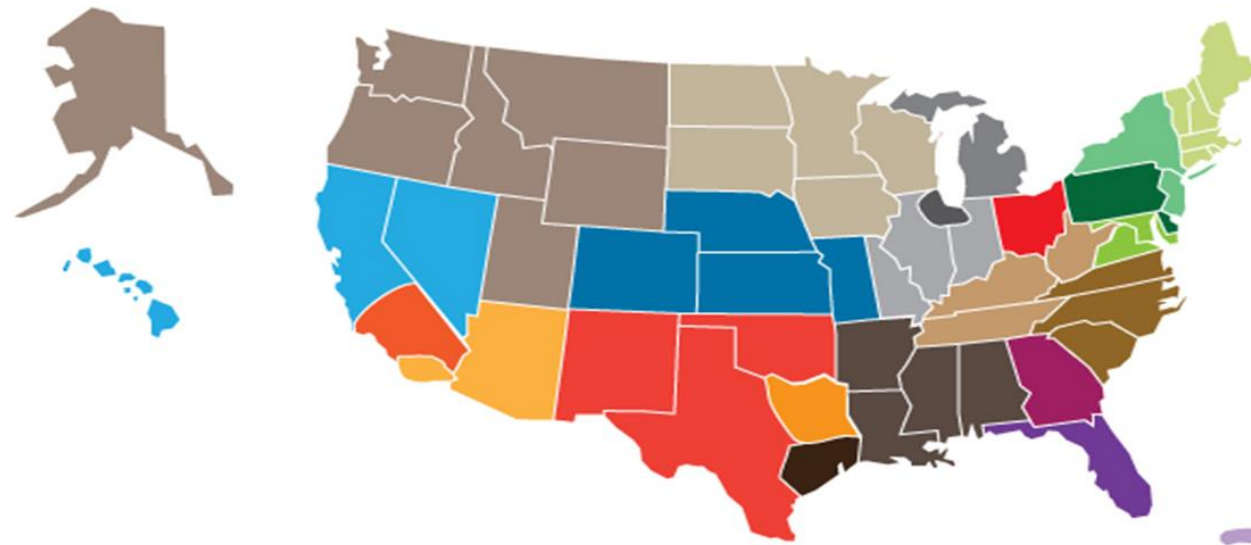
- ▶ Large corporations
- ▶ Purchasing/Supplier Diversity program
- ▶ Annual membership fee based on number of employees
- ▶ Non MBE business
- ▶ Several hundred to thousands of employees

## Constituents

- ▶ Certified MBE
- ▶ 51 percent ownership and control of a company by a minority
- ▶ U.S. citizenship
- ▶ Annual certification processing fee based on annual gross revenues

# The NMSDC Network

## National Minority Supplier Development Council 23 Councils | 6 Regions



### REGION 1

- North Central
- Northwest Mountain
- Mountain Plains
- Western Regional

### REGION 2

- Pacific Southwest
- Southern California
- Southwest
- Dallas/Fort Worth

### REGION 3

- Chicago
- Michigan
- Mid-States
- Ohio

### REGION 4

- Capital Region
- Eastern
- Greater New England
- New York & New Jersey

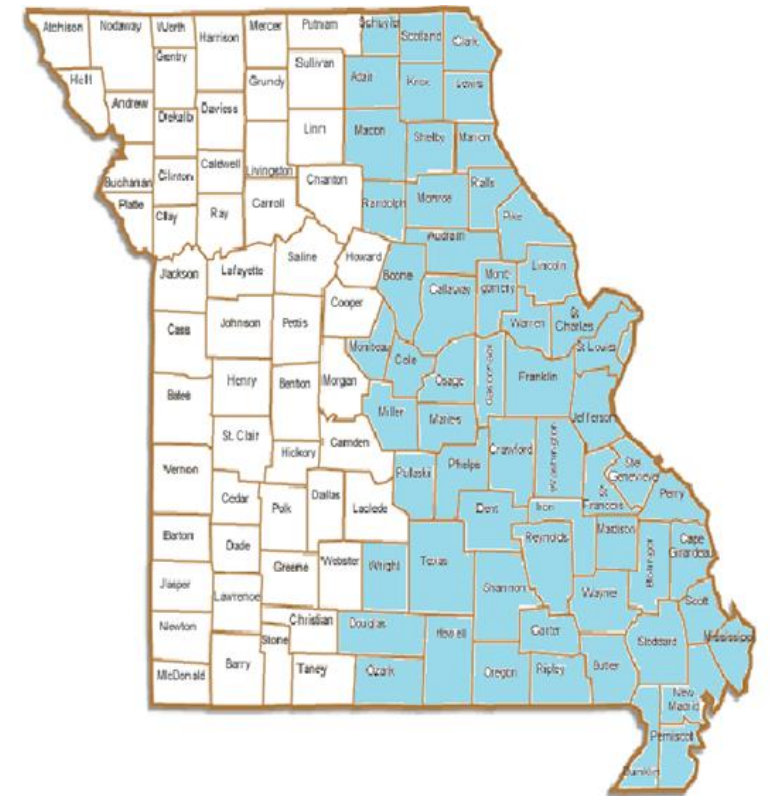
### REGION 5

- Florida State
- Georgia
- Puerto Rico

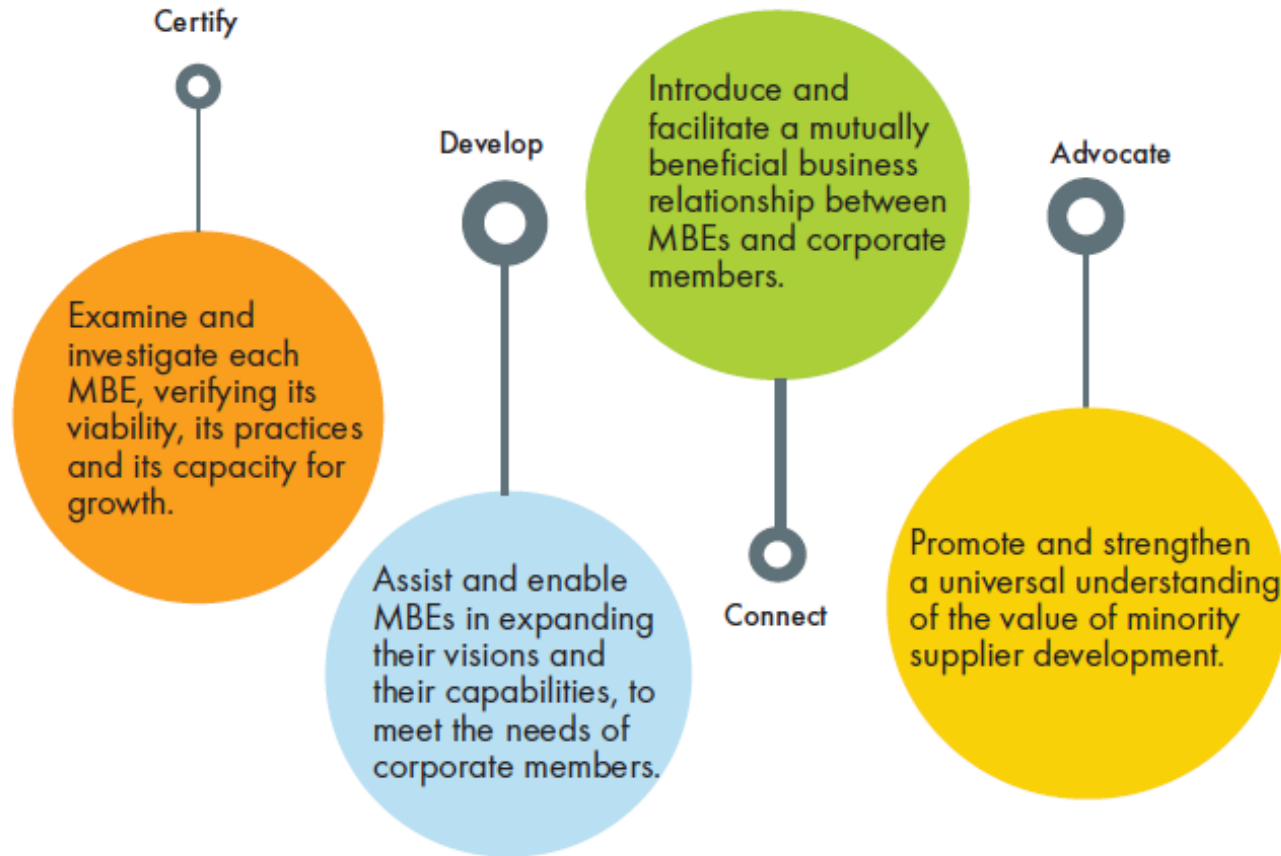
### REGION 6

- Carolinas/Virginia
- Houston
- Southern Region
- TriState

100







# NMSDC Goals



# Purpose of NMSDC Certification

- Minority Business Enterprise (MBE) is interested in doing business with corporate America and other minority owned companies
- Provides assurance that the businesses chosen through a corporation's supplier diversity efforts are legitimate minority owned and operated companies
- Business tool to facilitate more opportunities for your business

---

Nationally recognized certification

---

Opportunity to network with other certified MBEs and corporate members via the MBE Input Committee

---

Access to networking opportunities with corporate decision makers and minority business owners

---

Inclusion in a national MBE database sourced by NMSDC national and local corporate members

---

Subscription fee option for services delivered by affiliate councils throughout the NMSDC network

---

Invitation to private and public corporate sponsored events

---

Opportunity to obtain additional MBE certifications through partner relationships

---

**Benefits of  
minority business  
enterprise  
certification with  
Mid-States MSDC**

# Who is eligible to apply for certification with NMSDC??

Ethnic Minorities who are U.S. Citizens that can validate 25 percent ethnic origin in one of the following categories:

- ▶ Asian Pacific American
- ▶ African American
- ▶ Hispanic/Latino American
- ▶ Native American
- ▶ Asian Indian American

# Groups we do not certify

- ▶ North Africa (Egypt, Libya, Morocco, Algeria etc.)
- ▶ Iberian Peninsula (Spain, Portugal)
- ▶ Asia Minor Region (Peninsula between the Black Sea and the Mediterranean)
- ▶ Persian Gulf (Iran, Iraq, Saudi Arabia, etc.)
- ▶ Europe
- ▶ Non-ethnic females

# Pre-certification considerations

The business is owned, operated and governed/controlled by **51% ethnic minority owner(s)**

The ethnic minority owner(s) who make up 51% or greater ownership of the business are **U.S. Citizens**

The ethnic minority owner(s) with majority ownership in the business, hold the **highest executive titled position** within the company: (i.e. CEO, President, Chairman, etc.)

The company is **headquartered in Indiana, Missouri or Illinois**

The company is a **“for profit”** business

The company is **legally formed** as a Sole proprietor, LLC, Corporation (S or C) or Partnership

The company **is not** a holding company

# Application processing fees

Certification Processing Fee Schedule				
Fee Category	Class 1 Under \$ 1 Million	Class 2 \$1M-\$10M	Class 3 \$10M-\$50M	Class 4 \$50M +
Initial Certification	\$450	\$650	\$950	\$1,050
Recertification	\$400	\$600	\$900	\$1,000

Applications are processed in the order received. There is an expedited option available.

# The certification process

## ▶ OWNERSHIP

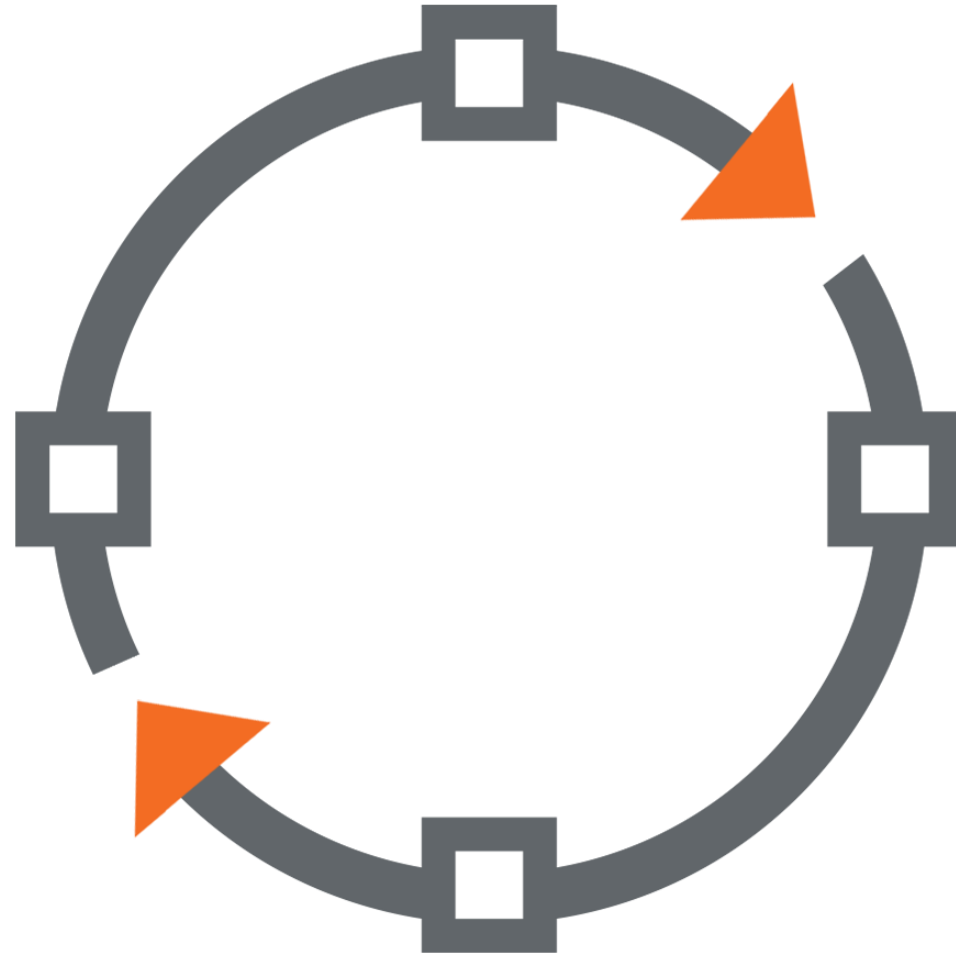
- ▶ The enterprise must be at least 51% owned by ethnic minority/minorities

## ▶ GOVERNANCE/CONTROL

- ▶ The majority owner must hold the highest office in the company and maintain documented governance/control of the business.

## ▶ MANAGEMENT

- ▶ Applicant displays the documented ability to operate or manage the daily operations of the business.





# The certification process

(all applications must be completed via the on-line certification database – paper documents cannot be accepted)

## STEP ONE

Submit On-Line  
Application  
and Processing  
Fee

## STEP TWO

Initial Review &  
Desk Audit

## STEP THREE

On-Site Visit  
Occurs

## STEP FOUR

Certification  
Committee  
Review

## STEP FIVE

Board of  
Directors  
Approval (2<sup>nd</sup>  
Friday of each  
month)

## STEP SIX

MBE  
Notification (3<sup>rd</sup>  
week of each  
month)

## STEP SEVEN

Required MBE  
WebEx  
orientation

# The certification process

## 60 Business Days – Regular Process

- ▶ Process begins once a completed application and all required documents are submitted electronically

## 25 Business Days – Expedited Process

- ▶ Process begins once a completed application and all required documents are submitted electronically
- ▶ Higher fee associated with expedited certification

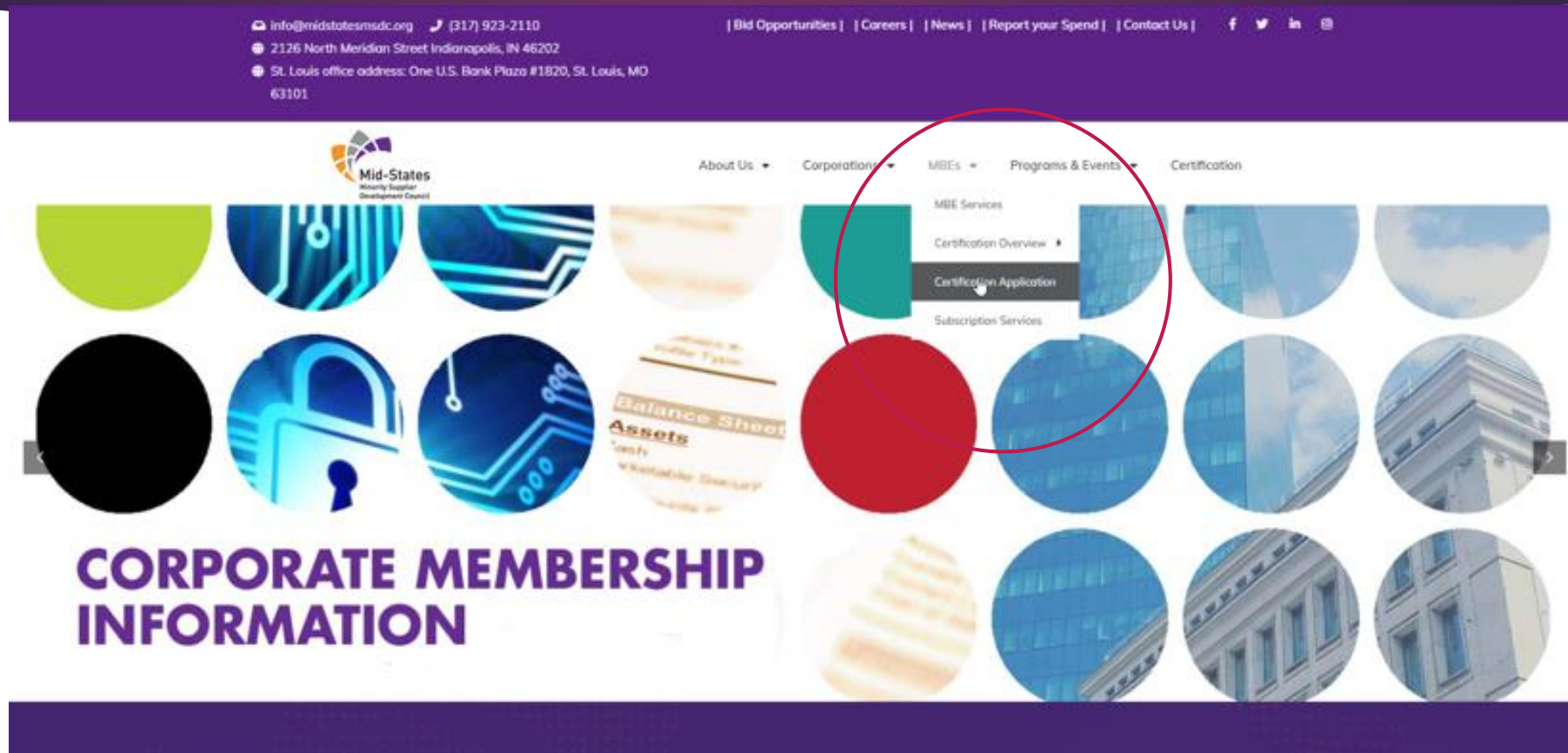
# The certification process



- ▶ The certification and annual recertification applications are completed using the online database, NMSDC Central.
- ▶ The application processing fee must be paid by credit card or check using our secure online payment portal.
- ▶ Access the portal using this address

<https://affiliate.nmsdc.org/midstatesmsdc/app/template/Index.vm>

**NMSDC Central**  
can be found on [www.midstatesmsdc.org](http://www.midstatesmsdc.org)



Click on the tab that says **MBEs** and a drop down box will appear. From there select **Certification Application**

# NMSDC Central

info@midstatesmsdc.org (317) 923-2110  
2126 North Meridian Street Indianapolis, IN 46202  
St. Louis office address: One U.S. Bank Plaza #1820, St. Louis, MO 63101

[| Bid Opportunities |](#) [| Careers |](#) [| News |](#) [| Report your Spend |](#) [| Contact Us |](#) [f](#) [t](#) [in](#) [@](#)



[About Us](#) [Corporations](#) [MBEs](#) [Programs & Events](#) [Certification](#)

## New Certification and Re-Certification



[New Certification](#)  
[Re-Certification](#)



**Select New Certification, then “Click Here” to create username and password**

# NMSDC central – step one

## ► Review the Guidelines and Complete the Form

► After completing and submitting the form, an email will be sent to you from [relay@adaptone.com](mailto:relay@adaptone.com) with additional instructions for completing the process.

► Please whitelist this email address to ensure you receive additional correspondence from NMSDC Central.



[Back to midstatesmsdc.org](#) [Certification Information](#)

### Step 1

Submit login information.

### Step 2

Check E-Mail and Confirm Account.

### Step 3

Submit Online Supplier Registration.

## Instructions for Creating a Login Account for the NRG Supplier Management Portal

### Step 1: User Registration

Welcome! Registering is an easy two-step process. The first step is to fill out the form below. After submitting your information, look for a confirmation email from us. Once you receive the email, just click on the link provided in the email, and your registration will be complete.

Guidelines for registering:

- You will use your email address to login to the system
- Passwords must be between 6-12 characters
- **After submitting your registration information, check your email for confirmation and instructions for completing the registration process.**

# Starting the application

Welcome, 2126nmeridian@gmail.com

[My Home](#)

[My Account](#)

[Logout](#)

[Home](#)

[Contact Us](#)



[Back to midstatesmsdc.org](#) [Certification Information](#)

To ensure that your company is not already in our database, please provide your Federal Employer Identification Number (FEIN)

FEIN:

[Continue](#)

**Personal Social Security Numbers ARE NOT allowed. Also, do not use the "dash" when entering your FEIN.**





**Mid-States**  
Minority Supplier  
Development Council

# Questions?

[WWW.MIDSTATESMSDC.ORG](http://WWW.MIDSTATESMSDC.ORG)